

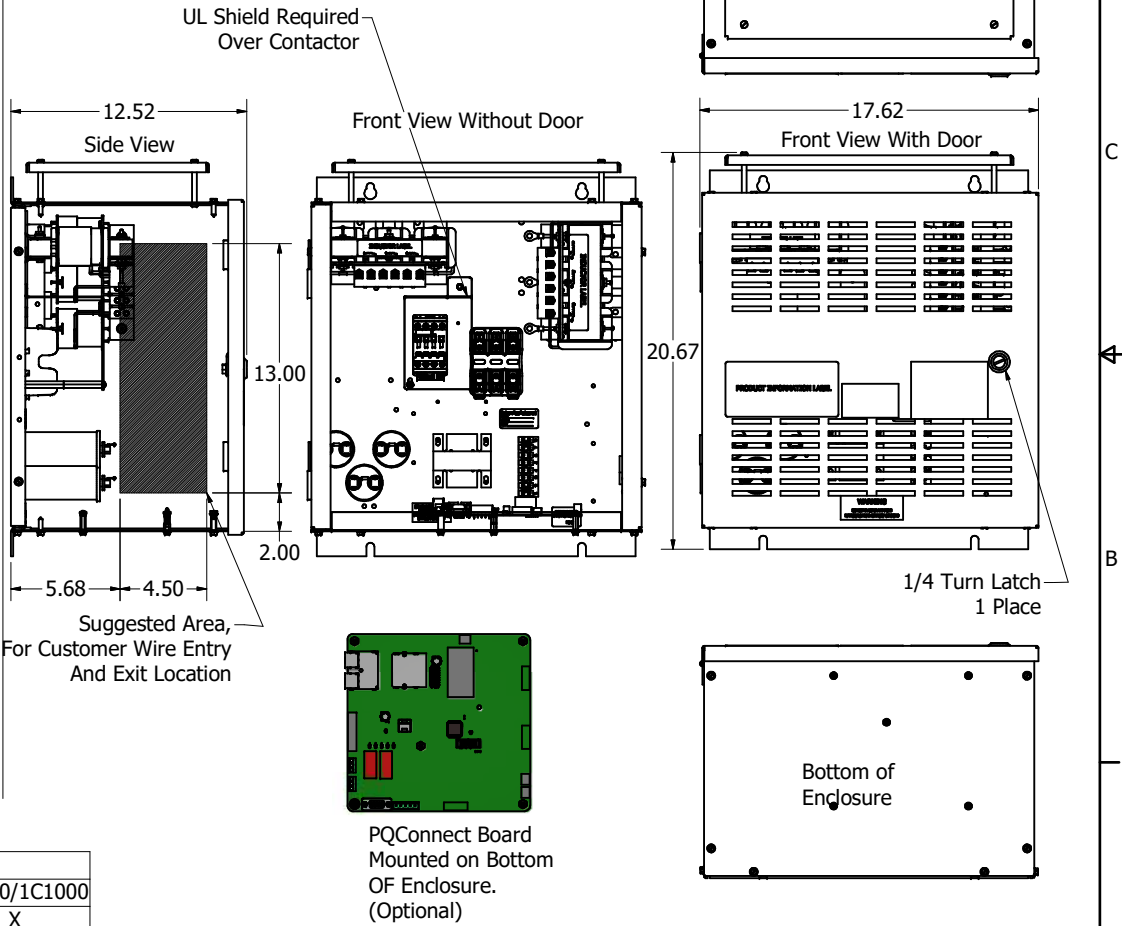
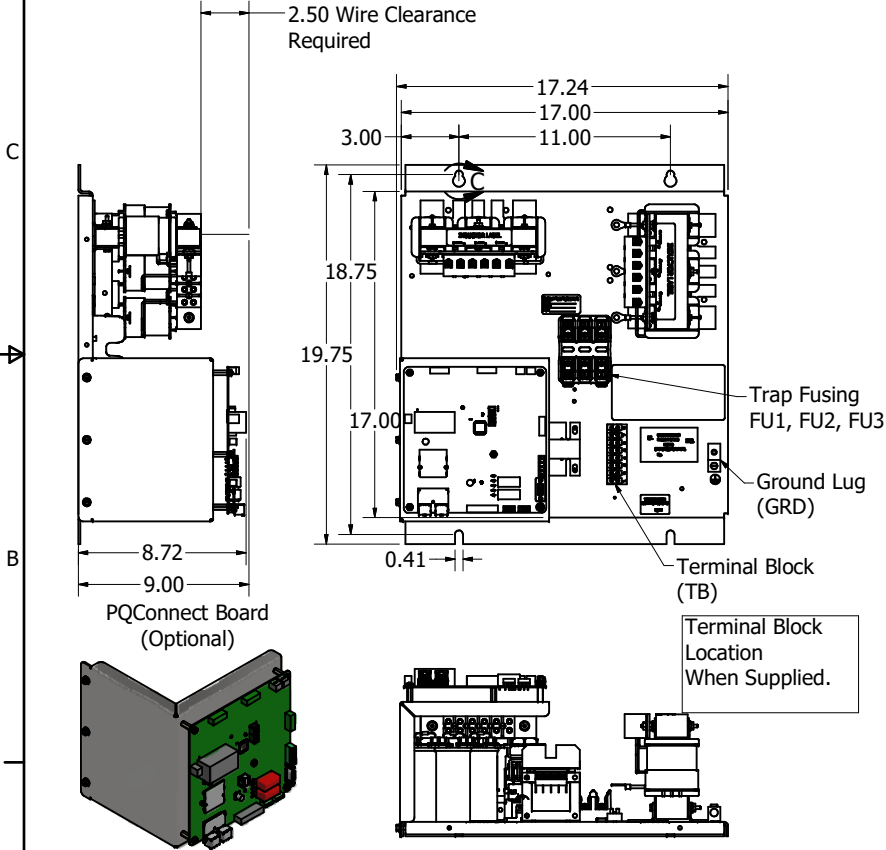
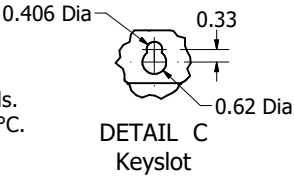
4				3				2			1			
HGP Open Part Number	Schematic Drawing #	Approx Weight (LBS)	TCI Drawing #	HGP Part Number	HorsePower (HP)	kVar	Harmonic	Voltage (V)	Hz.	Phase	HGP Eclosed Type 1 Part Number	Schematic Drawing #	Approx Weight (LBS)	TCI Drawing #
HGP0010CW0S0000	31663	41	108182-T1	HGP0010CW----	10	2.7	5th	600	60	3	HGP0010CW1S0000	31663	66	108182-T3
HGP0010CW0C0000	31663-1	45	108182-T2								HGP0010CW1C0000	31663-1	70	108182-T4
HGP0010CW0S1000	31663-PQ1	43	108182-T10								HGP0010CW1S1000	31663-PQ1	68	108182-T12
HGP0010CW0C1000	31663-PQ	48	108182-T11								HGP0010CW1C1000	31663-PQ	73	108182-T13

Note: For Torque Information  
See IOM Manual


Customer Connections.  
L1, T1, L2, T2, L3, T3  
Wire Range: 1 AWG to 22 AWG.

Ground Lug  
Wire Range: 1/0 to 14 AWG.

Note: Customer is responsible  
for proper cooling of filter  
components on open panels.  
Capacitors Maximum Ambient 50°C.



HGP0010CW----				
Components	0S0000/1S0000	0C0000/1C0000	0S1000/1S1000	0C1000/1C1000
Line Reactor (LR)	X	X	X	X
Trap Reactor (TR)	X	X	X	X
Capacitor (Cap)	X	X	X	X
Trap Fusing, FU1, FU2, FU3	X	X	X	X
Contactor (CNT)		X		X
Transformer (XFMR)		X	X	X
XFMR Fusing, FU4, FU5		X	X	X
PQConnect Board			X	X

<div>DIMENSIONS IN INCHES (EXCEPT AS NOTED)</div> <div>TOLERANCES (EXCEPT AS NOTED)</div> <div>XX ± .25</div> <div>XXX ± .10</div> <div>FRACTIONAL ± 1/32</div> <div>ANGULAR ± 1°</div>		<div>THE INFORMATION AND DESIGN CONTAINED IN THIS DRAWING ARE CONFIDENTIAL AND THE PROPRIETARY PROPERTY OF ALLIENT INC. AND ITS SUBSIDIARIES. NEITHER THIS DESIGN NOR ANY INFORMATION CONTAINED IN THIS DRAWING MAY BE REPRODUCED OR DISCLOSED TO OTHERS WITHOUT THE EXPRESS WRITTEN CONSENT OF ALLIENT INC. AND ITS SUBSIDIARIES.</div>		DESIGNED BY		<div></div> <div>W132N10611 Grant Drive Germantown, WI 53022 © 2025 Allient Inc.</div>			
				JRN					
				DATE					
				01/30/20					
C	7045	Tuning reactor change and capacitor change		5/8/25	DSW	HarmonicGuard Passive, HGP, 10HP 600/3/60, Open And Type 1			
B	6305	Update standard cap configuration		06/12/23	JRN				
A		As Designed		1/30/20	JRN				
NO	ECO	REVISION		DATE	BY	SCALE	DRAWN NO.	SIZE	SHT. 1 OF 1
						108182DG			